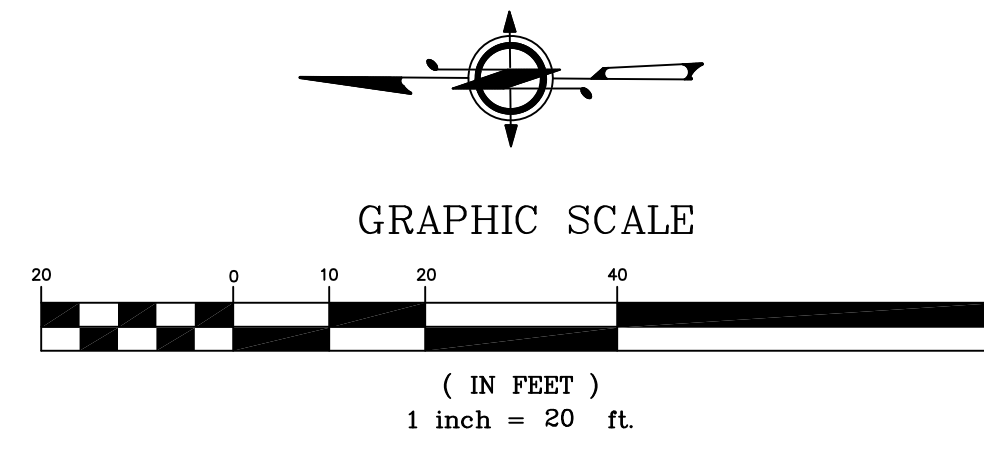


**Pine St.**  
 N01°20'56"E (BASIS OF BEARING)  
 467.93' (M)

**BLOCK 2**  
 ENGLAND'S ADD TO SNOHOMISH  
 (VOL. 1, PG. 38)

**LOT A**  
 SNOHOMISH BLA #BLA19-0001  
 (A.F. #201907155003)



**Horizontal Datum/Basis of Bearing:**  
 GRID NORTH WASHINGTON STATE PLANE NORTH ZONE  
 (REC. OF SURVEY A.F. #201203155003)

**Benchmark**

CITY OF SNOHOMISH  
 TOP CONC. MON. IN CASE  
 INT. PINE ST. & 6TH ST.  
 ELEV.=76.92  
 DATUM: NAVD88

**Legend:**

- NOT ALL SYMBOLS USED
- ⊕ EXISTING MONUMENT
  - ⊕ WATER METER
  - ⊕ EX. FIRE HYDRANT
  - ⊕ WATER VALVE
  - ⊕ UTILITY POLE
  - ⊕ UTILITY ANCHOR
  - ⊕ LIGHT POLE
  - ⊕ GAS VALVE
  - ⊕ STREET SIGN
  - ⊕ EX. CB, TYPE 1
  - ⊕ CATCH BASIN TYPE 2
  - ⊕ SAN SWR. MANHOLE
  - SS — SAN. SWR. PIPELINE
  - SD — STORM DRAIN
  - W — WATER PIPELINE
  - OHP — OVERHEAD POWER
  - G — GAS LINE
  - UG — UNDERGROUND POWER

**Tree Legend:**

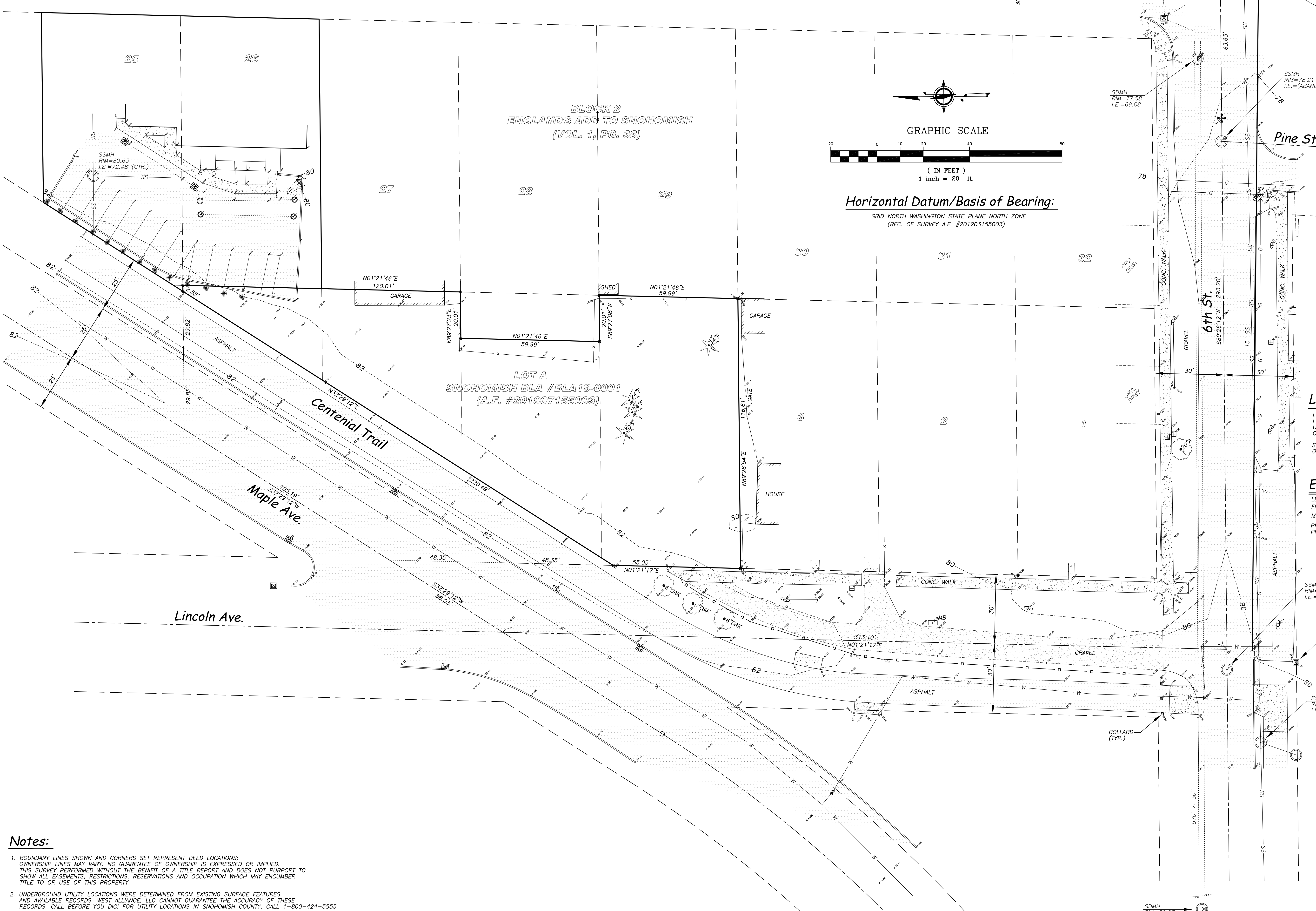
- A ~ APPLE
- F ~ FIR

**Legal Description:**

LOT A OF CITY OF SNOHOMISH BOUNDARY  
 LINE ADJUSTMENT FILE #BLA19-0001, RECORDED  
 UNDER RECORD NUMBER 201907155003 RECORDS  
 OF SNOHOMISH COUNTY, WASHINGTON.  
 SITUATE IN THE COUNTY OF KING, STATE  
 OF WASHINGTON.

**Equipment & Procedure:**

LEICA TS 12, 3 SECOND TOTAL STATION FOR  
 FIELD TRAVERSE.  
 MONUMENTS VISITED 7/2019  
 PRECISION EXCEEDS STATE STANDARDS.  
 PER: W.A.C. 332-130-090.

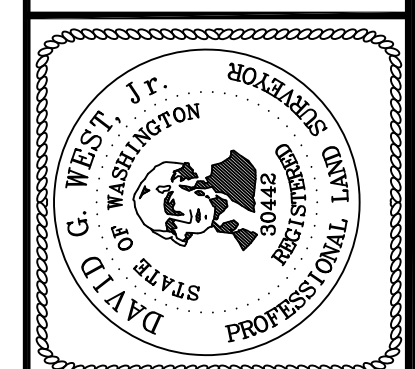
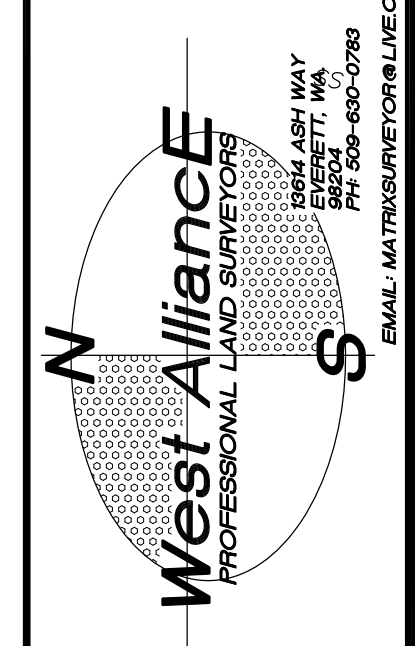


**Notes:**

1. BOUNDARY LINES SHOWN AND CORNERS SET REPRESENT DEED LOCATIONS; OWNERSHIP LINES MAY VARY; NO GUARANTEE OF OWNERSHIP IS EXPRESSED OR IMPLIED. THIS SURVEY PERFORMED WITHOUT THE BENEFIT OF A TITLE REPORT AND DOES NOT PURPORT TO SHOW ALL EASEMENTS, RESTRICTIONS, RESERVATIONS AND OCCUPATION WHICH MAY ENCUMBER TITLE TO OR USE OF THIS PROPERTY.
2. UNDERGROUND UTILITY LOCATIONS WERE DETERMINED FROM EXISTING SURFACE FEATURES AND AVAILABLE RECORDS. WEST ALLIANCE, LLC CANNOT GUARANTEE THE ACCURACY OF THESE RECORDS. CALL BEFORE YOU DIG! FOR UTILITY LOCATIONS IN SNOHOMISH COUNTY, CALL 1-800-424-5555.



REVISIONS:  
 1. ADDED OFFSITE TOPO 12/18/2019  
 DATE: 2/25/2019



Topographic Survey  
 For  
**Korbett & Elise Miller**

SHEET:  
 1 OF 1