



116 UNION AVENUE
SNOHOMISH, WA 98290

PROPOSED SITE PLAN

LAND USE DESIGNATION

- HISTORIC BUSINESS DISTRICT

SITE AREA IN SQUARE FEET

- 30,727 SQUARE FEET

REQUIRED SETBACK

- NONE

LOCATION OF EXISTING STREETS, PARKING AREA, OR OTHER IMPERVIOUS SURFACES

- SHOWN ON PLAN

LOCATION OF PROPOSED PUBLIC IMPROVEMENTS TO STREETS, PARKS, PLAYGROUNDS, OR OTHER PUBLIC USES

- (A) COMBINED STORM/SEWER CONNECTION
- (B) STORM WATER MAIN
- (C) INFILTRATION TRENCH
- (D) CONCRETE PAVING
- (E) WOODEN TRASH/TRANSFORMER ENCLOSURE
- (F) WATER MAIN CONNECTION TO BUILDING
- (G) PARK SITE
- (H) PLANTING AREA
- (I) CONCRETE PAVING
- (J) ELECTRIC TRANSFORMER
- (K) CONDUIT
- (L) TREE TO BE REMOVED / REPLACED
- (M) DRIVEWAY REPLACED W/CURB GUTTER SIDEWALK

ANY EXISTING OR PROPOSED PUBLIC OR PRIVATE COVENANTS, RESTRICTIONS, OR EASEMENTS.

- 1968 PUBLIC UTILITY DISTRICT OF NO. 1 OF SNOHOMISH COUNTY - EASEMENT FOR UNDERGROUND
- UNRECORDED LEASEHOLDS, IF ANY, RIGHTS OF VENDORS AND SECURITY AGREEMENT ON PERSONAL PROPERTY AND RIGHTS OF TENANTS, AND SECURED PARTIES TO REMOVE TRADE FIXTURES AT THE EXPIRATION OF THE TERM.

CRITICAL AREAS OR BUFFERS

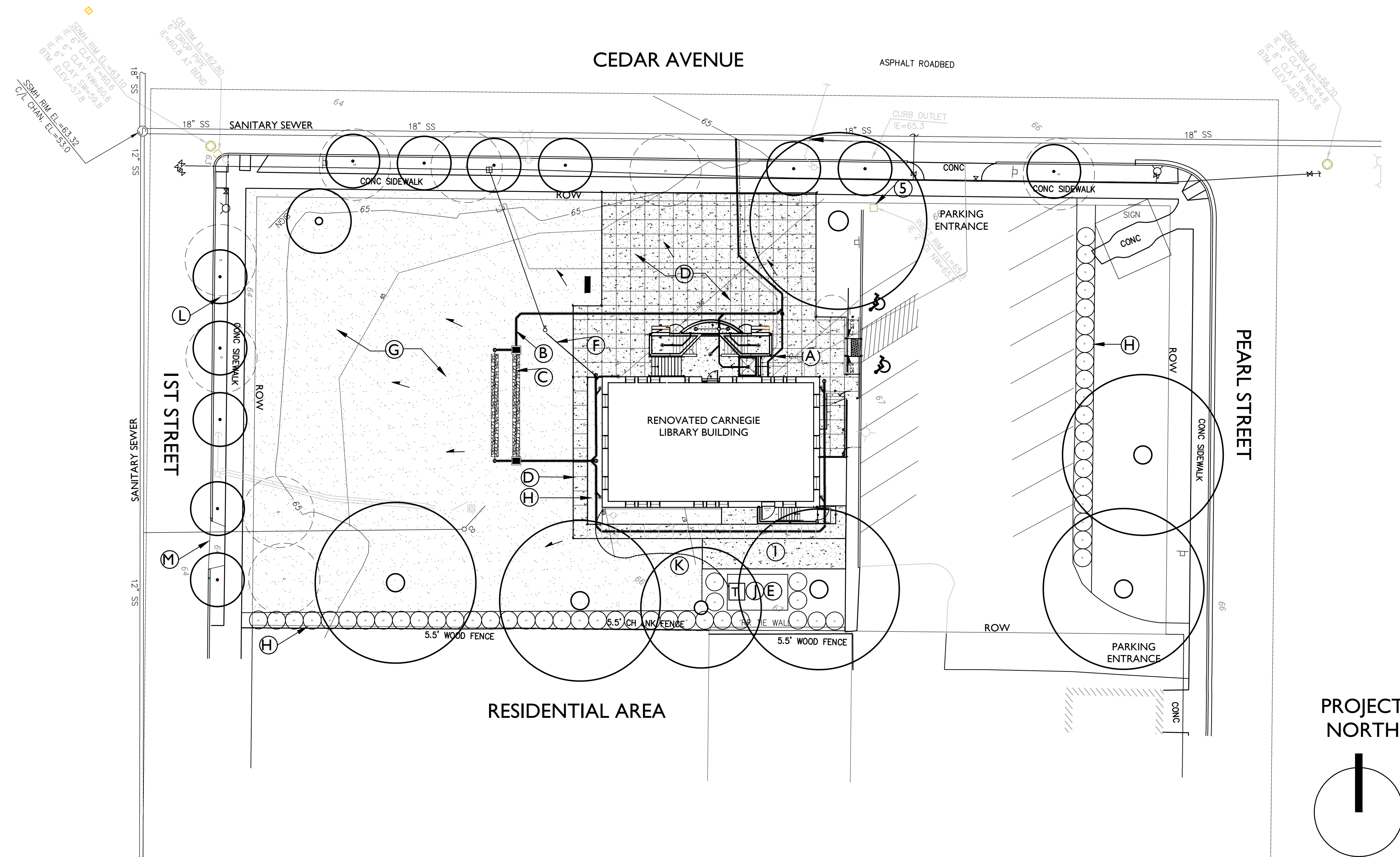
- NONE

ACCESS PLAN IDENTIFYING RIGHT-OR-WAY ENTRY POINTS, AND SIDEWALKS

- SHOWN ON PLAN

PARKING PLAN, CONSISTENT WITH REQUIREMENTS OF CHAPTER 14.235 SMC

- PARKING CONFORMS TO 14.235.040.



**CARNEGIE BUILDING PROJECT
PROPOSED SITE PLAN
SCALE 1" - 20' - 0"
MARCH 7, 2019**